



الأكاديمية العربية للعلوم والتكنولوجيا والنقل البحري
Arab Academy for Science, Technology & Maritime Transport

MRCC



International Maritime Transport and logistics Conference Toward Smart Ports

13-15 March 2016 Hilton Green Plaza – Alexandria - Egypt

Presentation Title:

Process of the adoption Information Technology (IT)
in Shipping Companies to improve the efficiency of ISM Code implementation

Name: Dr Capt Taha Lebbadi

- Shipping and safety at sea.

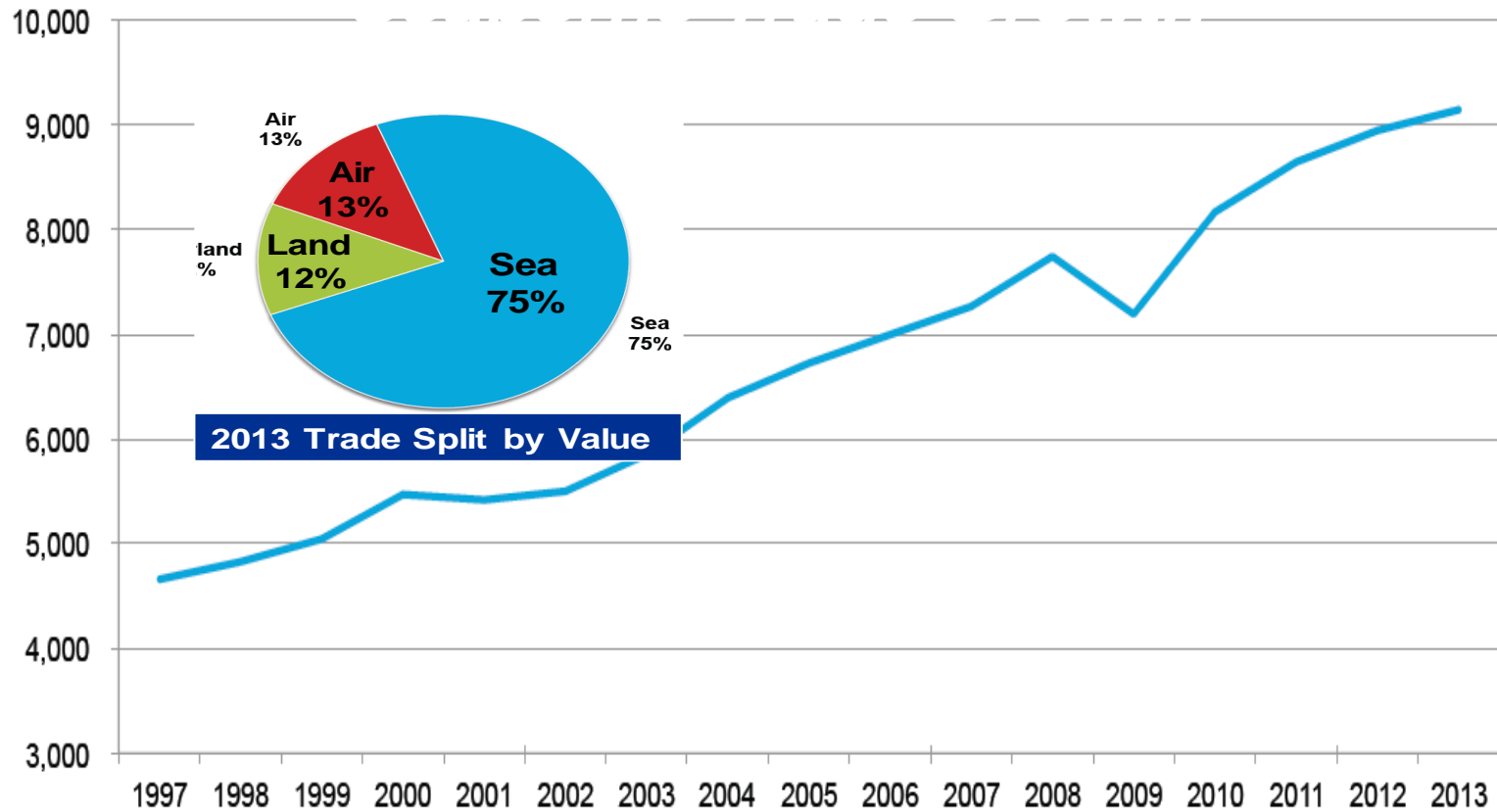


Figure 2; world trading carried out by the shipping industry (UNCTAD, 2014).

International Maritime Organization(IMO).

Maritime conventions, resolutions, circulars, guidelines.....

- The maritime catastrophes are occur.
Lloyd's List Intelligence Casualty Statistics.

THE INTERNATIONAL MARITIME TRANSPORT & LOGISTICS CONFERENCE (MARLOG 5)

TOWARD SMART PORTS

13– 15 MARCH 2016

Table1; Total loss by types of vessel 2005-2014. (Lloyd's List Intelligence Casualty Statistics. Analysis: AGCS (2015))

Period	Barge	Bulk	Cargo	Chemical / Product	Container	Dredger	Fishery	LPG/LNG	Other	Passenger	Ro-ro	Supply / Offshore	Tanker	Tug	Unknown	
2005	5	6	61	6	2	4	34	1	3	12	7	3		5		149
2006	6	8	61	11	4	3	23		3	12	10	3	2	7	1	154
2007	6	12	70	6	3	2	33		7	8	5	5	1	11	1	170
2008	3	8	58	7	2	5	36	1	5	4	8	1	3	7	1	149
2009		10	51	8	4		29		5	5	6	3	2	5		128
2010	1	11	60	5	5	2	21		3	3	1	2	3	7		124
2011		13	36	2	3	2	14	1	5	7	3	1	2	2		91
2012		8	61	8	5	2	12	1	3	6	5	3	1	6		121
2013	3	15	40	10	4		13		6	8	2	2		7		110
2014	1	3	25	2	4	1	14		3	7	5	2	1	7		75
Total	25	94	523	65	36	21	229	4	43	72	52	25	15	64	3	1,271

THE INTERNATIONAL MARITIME TRANSPORT & LOGISTICS CONFERENCE (MARLOG 5)

TOWARD SMART PORTS

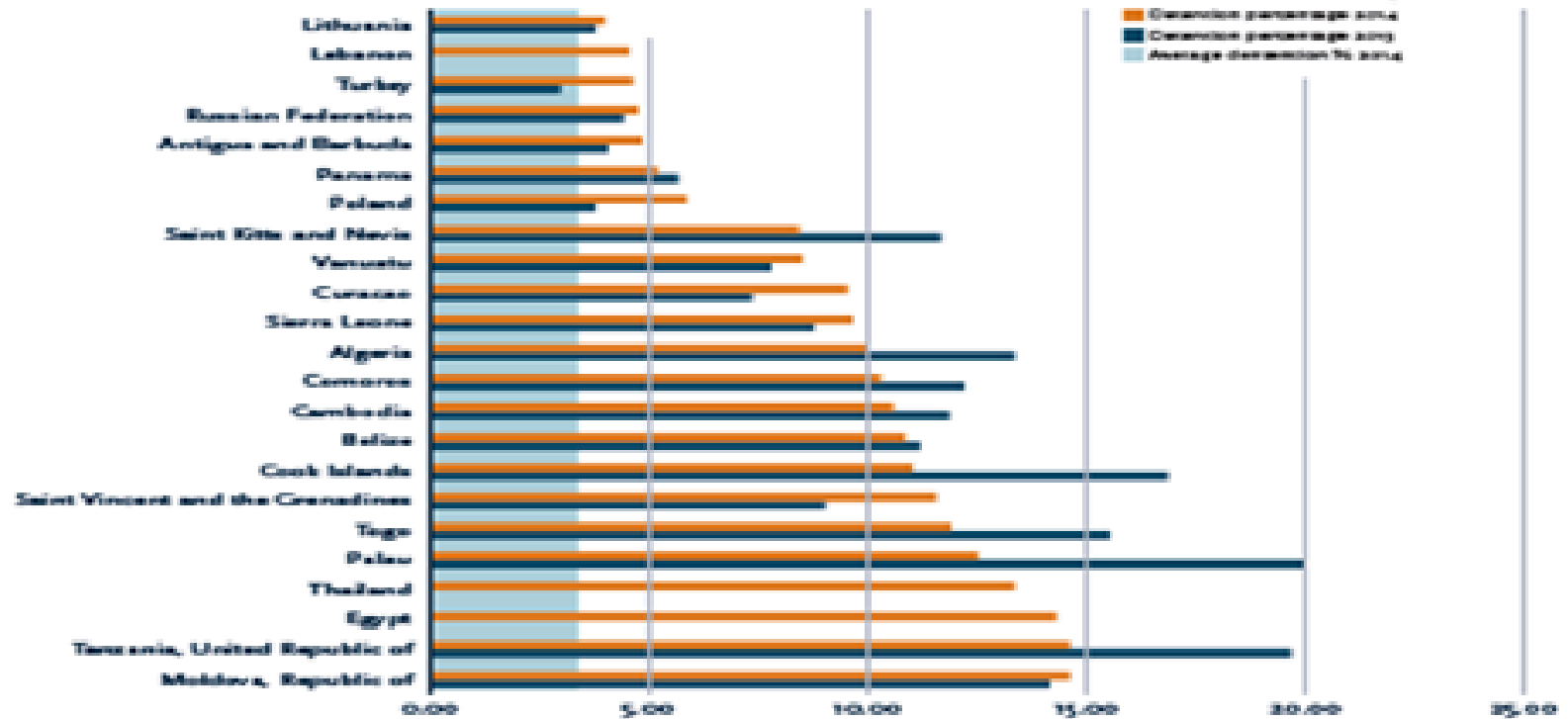
13– 15 MARCH 2016

Table 2; Cause of Total losses 2005-2014. (Lloyd’s List Intelligence Casualty Statistics. Analysis: AGCS (2015))

	2005	2006	2007	2008	2009	2010	2011	2012	2013	2014	Grand Total
Collision (involving vessels)	26	23	17	12	13	10	3	5	2	2	113
Contact (e.g. harbour wall)	5	2	2	1	1			2			13
Foundered (sunk, submerged)	56	64	69	73	61	64	43	55	69	49	603
Fire/explosion	16	19	17	16	14	11	8	13	15	4	133
Hull damage (holed, cracks, etc.)	8	4	11	4	7	4	3	5	1	3	50
Missing/overdue	3	1	1			1					6
Machinery damage/failure	8	11	14	8	6	4	6	15	2	3	77
Piracy	1		1		1	2					5
Wrecked/stranded (aground)	23	29	35	34	23	22	28	25	20	13	252
Miscellaneous	3	1	3	1	2	6		1	1	1	19
Grand Total	149	154	170	149	128	124	91	121	110	75	1,271

- **Advanced Navigational Equipments.....**
 - (AIS, SSAS, LRIT, ECDIS, SATCOM, GMDSS,.....)
- **Maritime catastrophes are still occur.**
 - **Port state control'** (management in sub-standard ships)

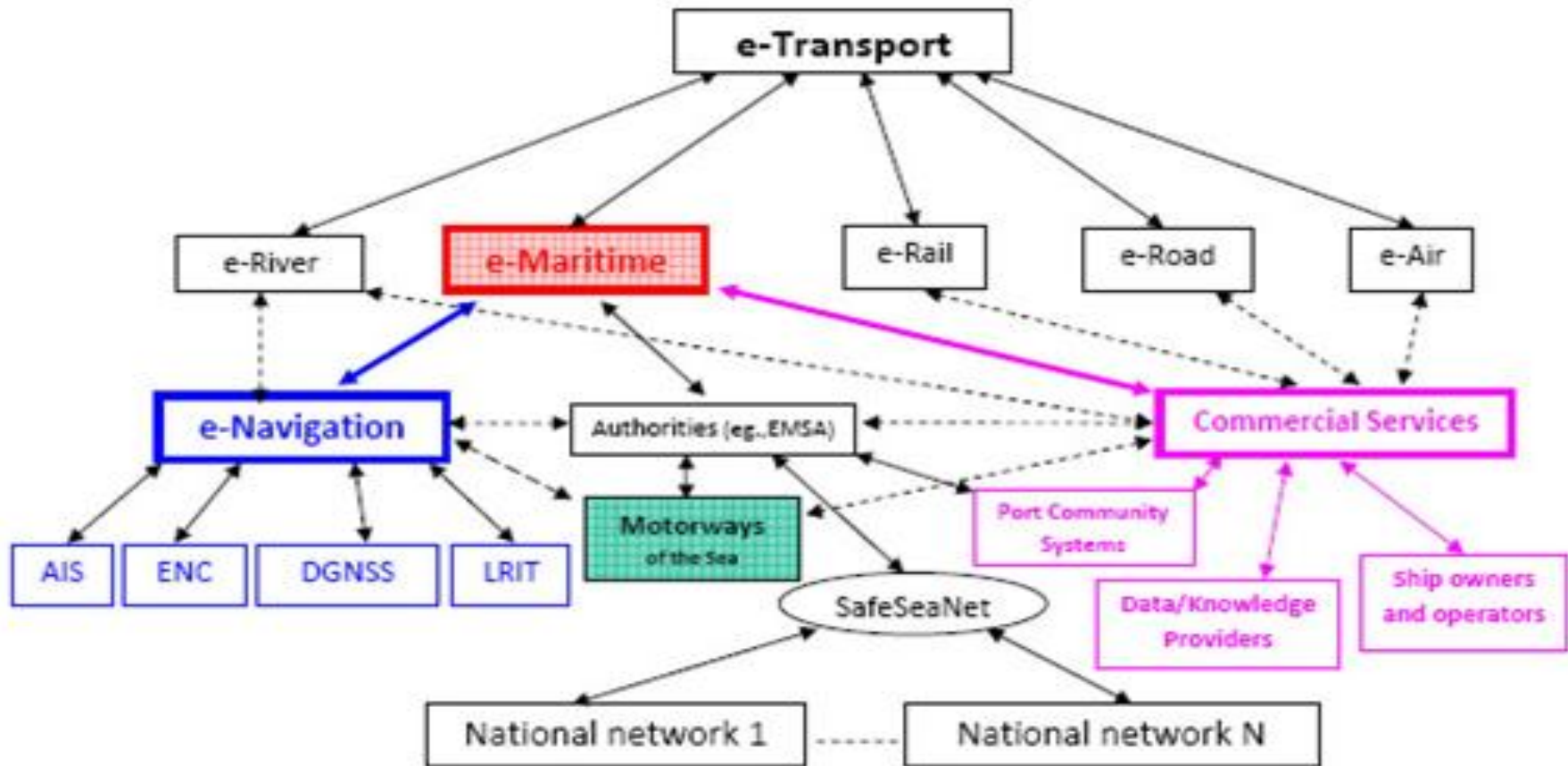
2014 detentions per flag, exceeding average percentage



Only flags with 20 and more port State control inspections in 2014 and with a detention percentage exceeding the average percentage of 3.32% are recorded in this graph. In 2013 the average detentions percentage was 3.78%.
 The grey column represents the 2014 average detention percentage (3.32%).

Figure 3; Detention ships per flag in 2014, exceeding average percentage

Information System: E-Transport. Dan Pillich (Pillich 2007).



Figure; 4. e- Maritime and e- Navigation shown in the broader context of e- Transport information services provision.

- ***Adoption of Information Technology (IT)***
 - e-commerce & e-business, Internet banking.....
- ***Shipping organization and Information Technology.***
- ***SMS research gap.***
- ***Innovation adoption - Structural Model of Technology.***

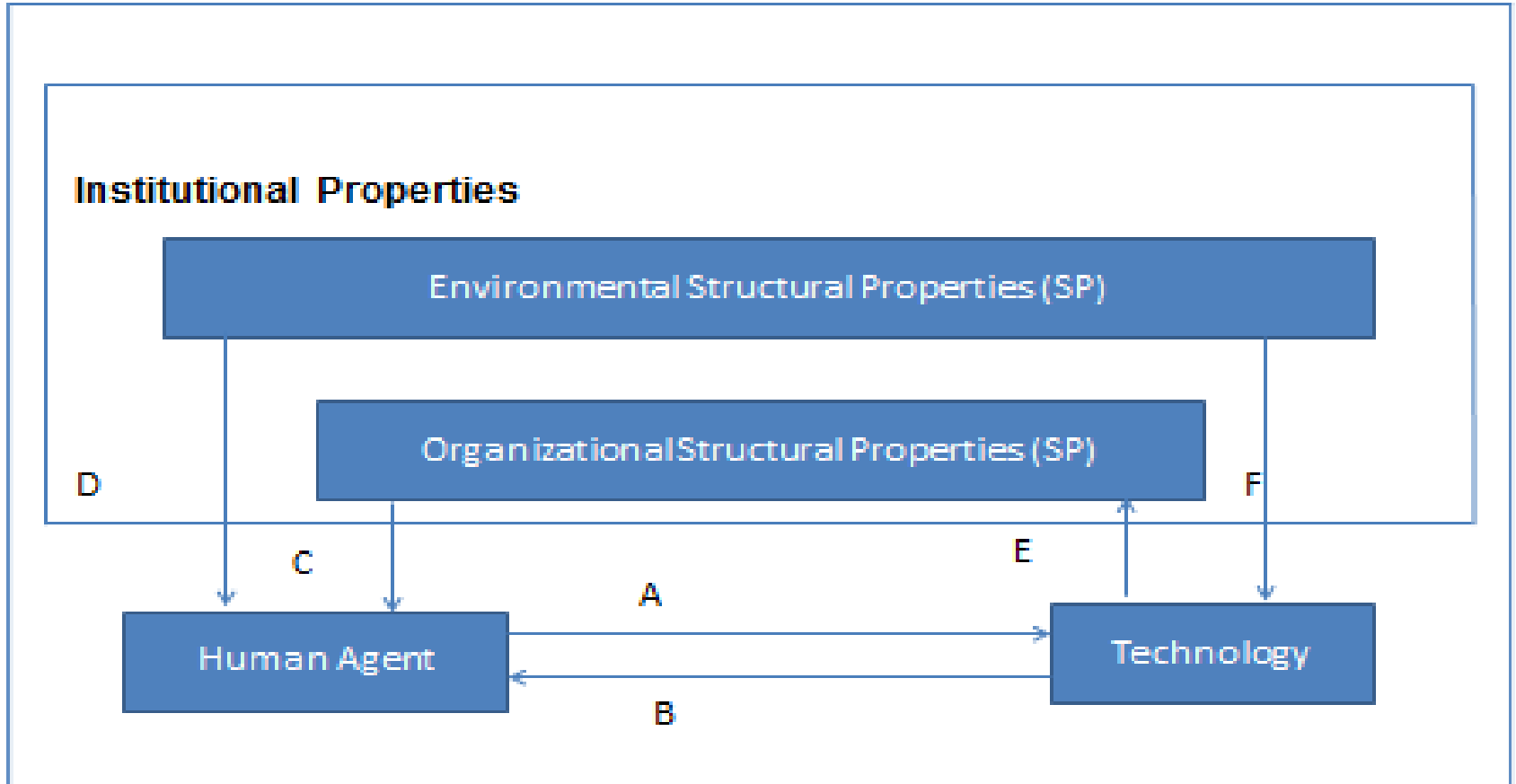


Figure 4; an Extension model of Structural Model of Technology (Orlikowski 1992)

- *Innovation adoption through Institutional theory.*

arrangements perspectives using theory from DiMaggio and Powell (1983) and Choo (2006).

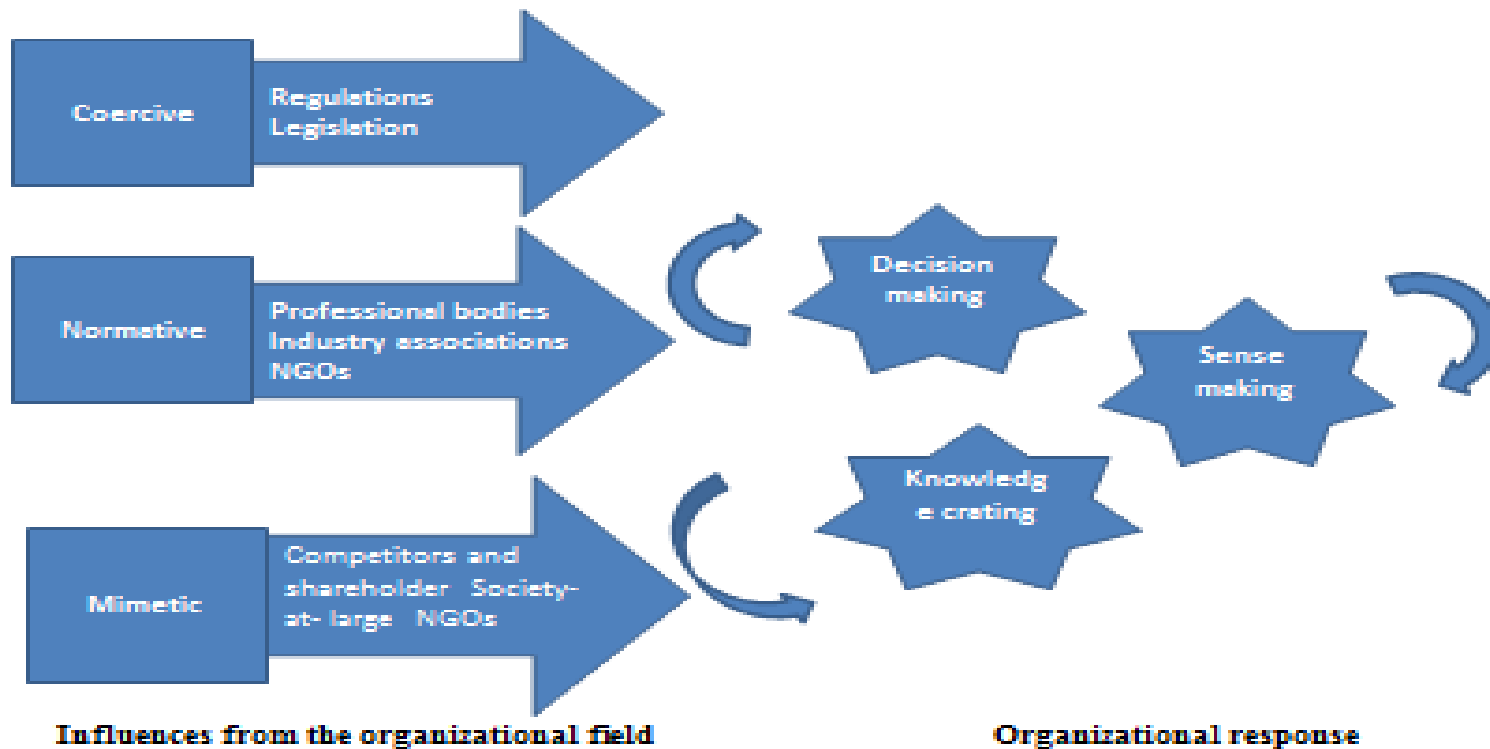


Figure 5; Institutional Environments and Organizational Arrangements (adapted from DiMaggio and Powell (1983) and Choo (2006)).

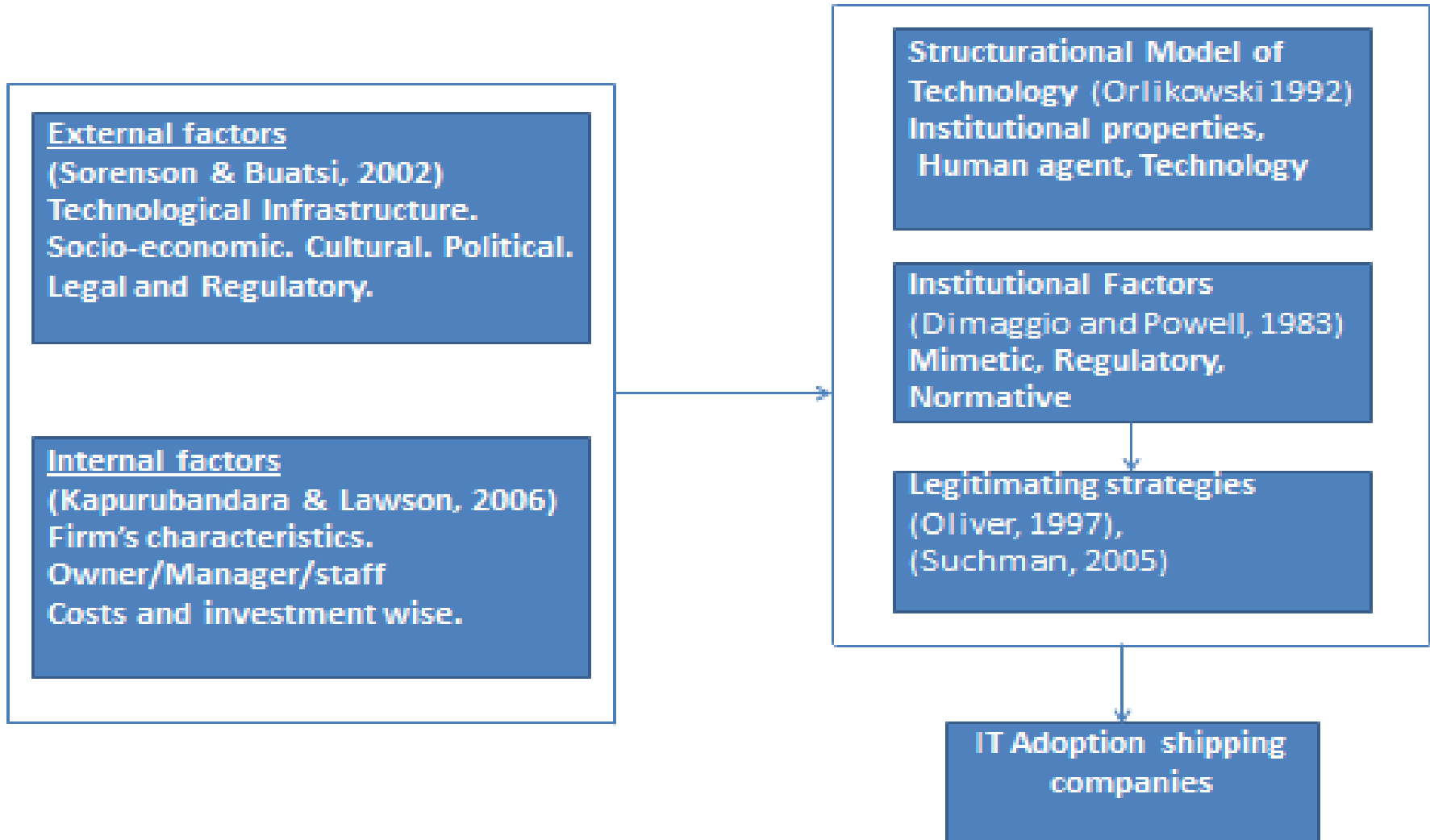


Figure: 6; IT Adoption Proposal Research Frameworks

Conclusion

- **Explore the process of IT adoption....**
(contributing of relevant theories in the field of IT & IS)
- **The study has provides research gap to improve implementation of ISM code.**
- **Regulative factors.....**(Micro level & Macro level)
- **Develops of a theoretical IT adoption proposal research framework.**

Recommendation

- **Process of IT for SMS implementation needs to be backed up by institutional and regulative policies .**
- **Integrate database of SMS between office and ships at sea.**

THE INTERNATIONAL MARITIME TRANSPORT & LOGISTICS CONFERENCE (MARLOG 5)

TOWARD SMART PORTS

13– 15 MARCH 2016

Thank you